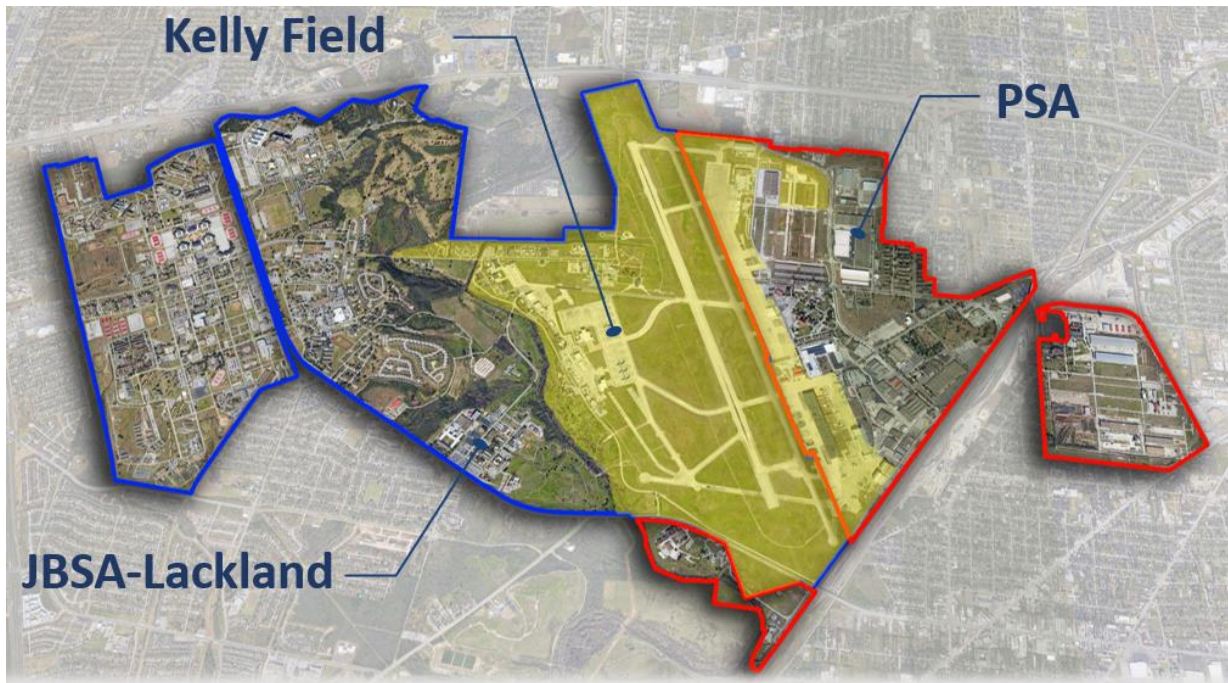


Project	Kelly Field Airport (SKF) Comprehensive Plan
Meeting	Technical Advisory Committee Meeting #1
Location	Port San Antonio Headquarters, 907 Billy Mitchell Blvd., Ste 110
Date	Tuesday, June 9, 2020
Time	10:00am – 11:30am

Kelly Field ***A National Airport***

1. Introduction

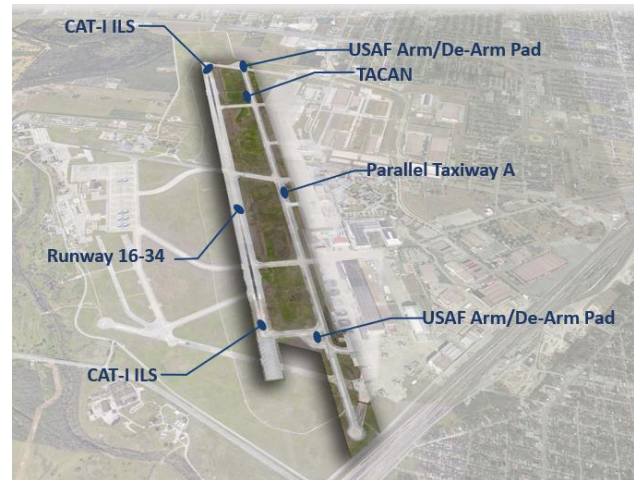
Kelly Field is a joint use, civil-military airfield that is owned, operated and maintained by the U.S. Air Force (USAF) via Joint Base San Antonio-Lackland (JBSA-Lackland). Through a Joint Use Agreement (JUA) signed in 2001 and updated in 2013, Port San Antonio (PSA) utilizes the airfield for civilian use through operation of its industrial airpark. Future development plans for Kelly Field have been prepared independently by JBSA-Lackland and PSA, as such, a Comprehensive Plan (“the Plan”) is needed to merge and reconcile these plans to achieve a single vision that satisfies both military and civilian ideals over a 20-year planning horizon.



2. About Kelly Field

Kelly Field was established by the U.S. Army in 1916 and 1917 as a new aviation due to space limitations at the nearby Fort Sam Houston. The airfield played significant roles in both World Wars I & II by providing critical flight training and aircraft maintenance. The airfield was renamed to Kelly Air Force Base in 1948 following the creation of the USAF and continued to play significant roles in military missions for decades, including the Korean War, Vietnam War, Desert Storm, and Desert Shield.

In 1995, the Kelly Air Force Base was identified for closure under Base Realignment and Closure (BRAC) recommendations, which resulted in a large portion of the base being transferred to PSA. The lands retained by the USAF include the runway, taxiway, and critical infrastructure related to the operation of the airfield (approx. 470 acres), referred to as the “Jointly Used Flying Facilities” in the JUA and Plan (right image).



The Jointly Used Flying Facilities are located easterly adjacent to JBSA-Lackland and westerly adjacent to PSA. The Jointly Used Flying Facilities coupled with the aviation components at JBSA-Lackland and PSA encompass Kelly Field as the subject of the Plan.

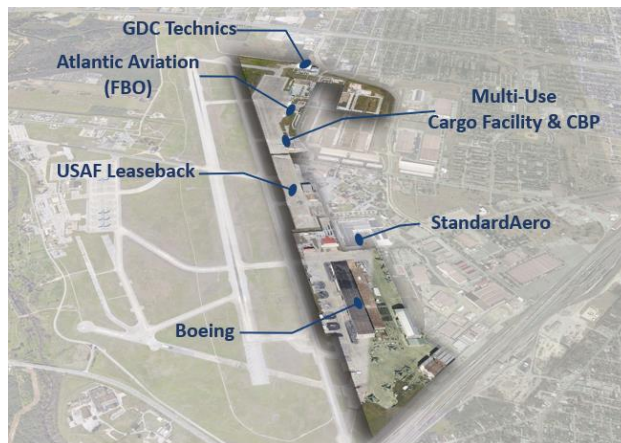
Military operational flying units at Kelly Field include the 149th Fighter Wing and the 433rd Airlift Wing (right image).



The 433rd is an USAF Reserve Command unit responsible for training USAF active duty, reservists, and National Guard airmen to operate and maintain the C-5M Super Galaxy. The C-5M is a strategic transport aircraft and the largest aircraft in the USAF inventory that serves a primary mission to transport cargo and personnel for the Department of Defense. The 149th Fighter Wing is a Texas Air National Guard unit responsible for training USAF active duty and National Guard airmen to operate and maintain the F-16 Fighting Falcon. The F-16 is a compact, multi-role fighter aircraft that provides high maneuverability in both air-to-air combat and air-to-surface attacks.

PSA is a political subdivision of the State of Texas that was created to redevelop and operate the former Kelly Air Force Base for the economic benefit of Texas and the City of San Antonio.

PSA maintains and operates the lands adjacent to the Jointly Used Flying Facilities (approx. 450 acres) as an industrial airpark for civilian aviation purposes (right image). The principle civilian aviation use is maintenance, repair and overhaul (MRO) of military and commercial aircraft, while other uses include general aviation, cargo services, and medical airlift services. Approximately 50 acres of this airside land is leased back to the USAF.



3. What is the Technical Advisory Committee?

The Technical Advisory Committee (TAC) is a collection of stakeholders with technical expertise beneficial to the planning process and development of the Plan. Expertise can include, but is not limited to, aeronautical development and operations, economic development, land use and zoning, transportation, and community leadership and insight.

4. Purpose of the TAC for Kelly Field

The TAC for Kelly Field will advise and provide recommendations to the Alamo Area Council of Governments (AACOG) and CHA Consulting, Inc. (CHA) in preparation of the Plan. The TAC will convene three times and will discuss various topics throughout the lifecycle of the planning process, generally to include the below six components. A meeting agenda will be provided in advance of TAC meetings so participants can prepare accordingly.

- (1) Input on the current state, operation and deficiencies of Kelly Field
- (2) Existing conflict and compatibility issues between JBSA-Lackland, PSA, and the surrounding community
- (3) Planned development that may present conflict and compatibility issues between JBSA-Lackland, PSA, and the surrounding community
- (4) Resolutions to conflict and compatibility issues
- (5) Alternative development concepts for Kelly Field
- (6) Existing and future economic impacts of Kelly Field

5. Who Should Attend the TAC Meeting?

AACOG and CHA believe you have the expertise beneficial to the Plan’s planning process and should attend – or alternatively to designate someone to participate on your, or your organizations, behalf and authority.

6. What to expect at TAC Meeting #1

A meeting agenda will be provided in advance of TAC meetings so participants can prepare accordingly, but in general TAC Meeting #1 will review the state of the Plan described below and will identify any additional existing conflict and compatibility issues for Kelly Field.

Attendees will also be encouraged to input or comment on other aspects of the Plan, such as missed data collection, overlooked regulatory or planning context, or insight on economic development. More technical presentations and solicitations will be made at TAC Meeting #2 concerning the ALS and alternative development concepts for the airfield and aviation components, though an overview will be given at TAC Meeting #1.

7. Current State of the Plan

AACOG and CHA started the planning process in December 2019 and have accomplished the following milestones:

- (1) Collected existing data related to Kelly Field
- (2) Cataloged the authority, regulatory, and planning context of Kelly Field
- (3) Defined the boundaries of Kelly Field among the Jointly Used Flying Facilities, JBAS-Lackland, and SPSA – and detailed existing conditions (including 3D model)
- (4) Held the Plan kick-off meeting with stakeholders in January 2020
- (5) Created a comprehensive plan website at www.skfcomprehensiveplan.com
- (6) Finalizing Working Paper #1 that embodies draft text of the Plan’s background, public involvement, authority/planning context, existing conditions, and airfield planning and design criteria
- (7) Started to gather economic impact data to be used to analyzed and develop the economic impact of Kelly Field
- (8) Started to create alternative concepts of an “Alternate Landing Surface” (ALS”) at Kelly Field as discussed at the Plan kick-off meeting
- (9) Started to create alternative concepts for the location of the Civil Terminal Building, now planned for the north side of the airfield
- (10) Started to review and assess existing conflict and compatibility issues

8. Current Plan Schedule

Comprehensive Plan
 Kelly Field (SKF)



Project Schedule

Task	2019	2020											
	Dec	Jan	Feb	March	April	May	June	July	Aug	Sept	Oct	Nov	Dec
1. Project Initiation & Administration													
2. Stakeholder & Public Involvement													
3. Data Collection, Inventory & Mapping													
4. Survey & Interview Key Stakeholders													
5. Conflict Compatability Anaysis													
6. Conflict Resolution Strategies													
7. Prepare Comprehensive Plan													

Working Period
 Stakeholder Meeting
 Policy and/or Technical Committee Meeting
D Draft Comprehensive Plan
R Review Draft Plan
F Final Comprehensive Plan

9. Project Website with More Information and Points of Contact

Please visit the project website at www.skfcomprehensiveplan.com for all current and upcoming information, including:

- (1) TAC Meeting Dates/Times, Agendas, Presentations, etc.
- (2) The presentation given at the January 29, 2020 kick-off meeting (PDF)
- (3) Current schedule and components/process of the Plan
- (4) Library of documents (PDF) and website links related to the authority and planning context of Kelly Field (*not inclusive of all material used in the Plan*)
- (5) Working Paper #1 will be posted in the coming weeks

If you have any questions or concerns about the TAC, TAC Meeting #1, or the Plan, please contact Larry, Robert, or Rick:

Larry Dotson, AACOG Compatible Use Program Manager
LDotson@aacog.com or (210) 832-5089

Robert LaFayette, CHA Aviation Planning Team Leader
RLafayette@chacompanies.com or (317) 780-7313

Rick Crider, PSA Executive VP, Airport, Railport, and Military Relations
Rick.Crider@PortSanAntonio.us or (210) 362-7844